

# POWERFLEX®

## PART NUMBER

# PFF50-420

## DESCRIPTION

## LOWER ENGINE REAR MOUNT BUSH

## INSTALLATION GUIDE

### Contents (parts per pack):

- |                         |                            |
|-------------------------|----------------------------|
| 2 x Polyurethane Bushes | 1 x PTFE/Silicone Grease   |
| 2 x Mild Steel Washers  | 1 x Stainless Steel Sleeve |

Please read the complete fitting instructions and check package components before fitment. These fitting instructions are to be used as a guide and in conjunction with workshop manual.

It is recommended that:

- all work to be carried out by a licensed technician;
- all safety precautions adhered to;
- wheel alignment to be checked and adjusted as required after any suspension work.
- All fasteners must be tensioned to manufacturer's torque settings.

### Fitting Instructions:

1. Support the engine/gearbox from underneath using an axle-stand or transmission stand.
2. Remove the forked lower torque arm.
3. Remove the original bush from the engine mount bracket using a puller, or by cutting out the rubber and its outer shell.
4. Once removed, clean any dirt and corrosion from the mounting bracket and remove any sharp edges using a rounded file.
5. Fit the polyurethane bushes into either side of the engine mount bracket.
6. Apply some of the supplied grease to the bore of the bush and outer faces and then insert the stainless steel sleeve until flush on both sides.
7. Add the washers to the end faces of the bush, and re-fit the forked torque arm.
8. Tension all hardware to the manufacturer's recommended torque settings.

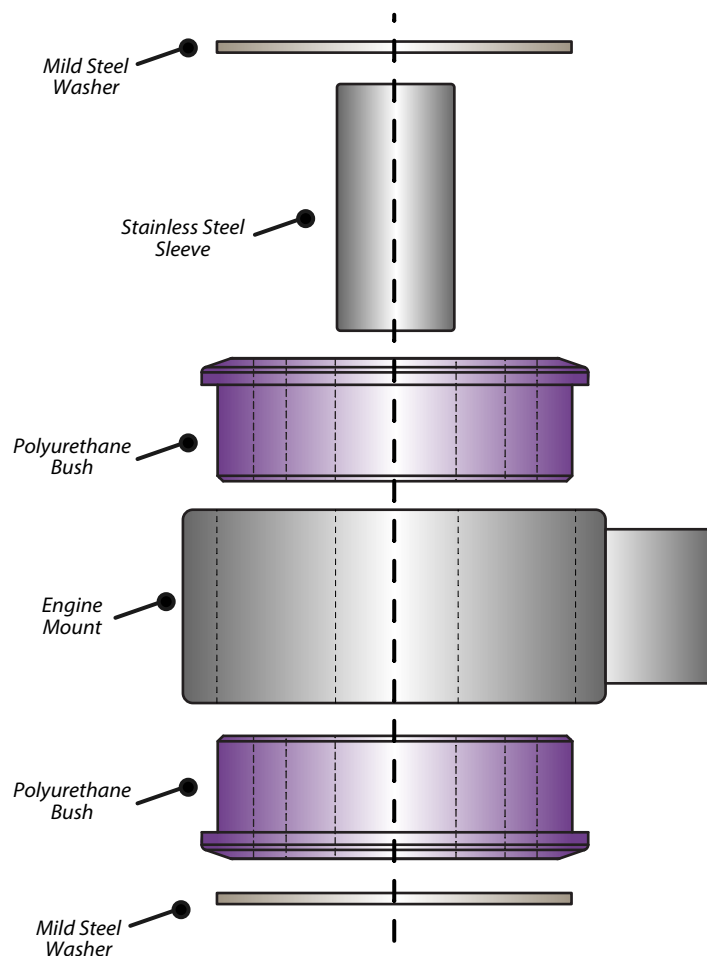


Figure 1

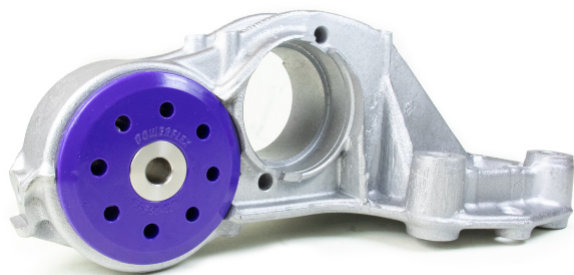


Figure 2 - Fitted